

PARK REVE -GENERATION

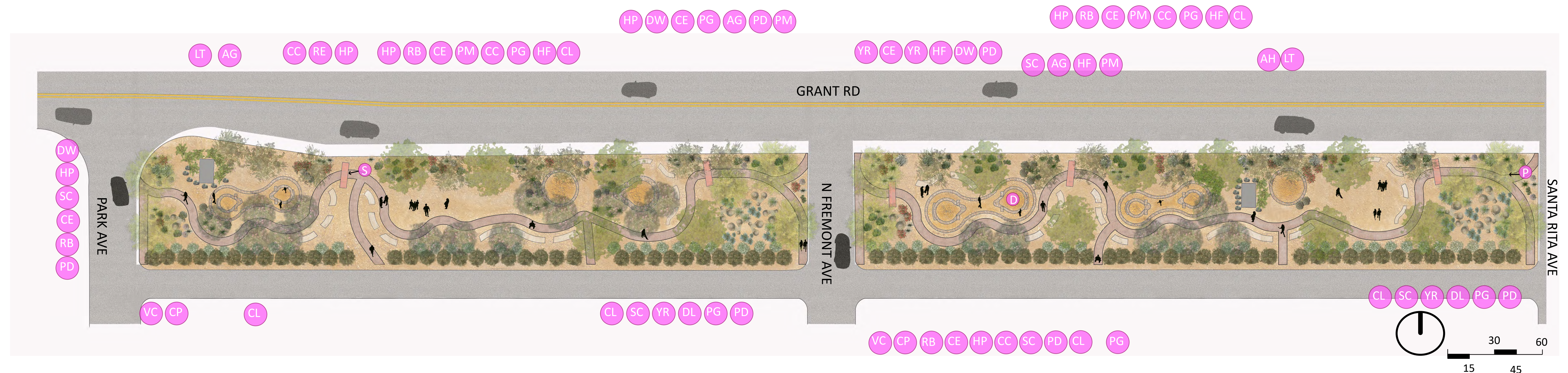
PROGRAM:

Park Reve-Generation envisions an urban linear park for the Jefferson Park neighborhood of Tucson. The site on Grand Road was formerly the site of single family homes that were cleared as park of the road's expansion project: it currently offers residual vegetation and shade. The blocks between Park Avenue and Santa Rita Avenue are immediately adjacent to residences in the south, a major arterial to the north, and commerce and service to west. The location provides an opportunity to frame this public space as a pedestrian and cyclist connective corridor between residences and commerce within the urban matrix. Park Reve-Generation encourages "dream generation" via outdoor activity and engagement by pedestrians in a densely vegetated setting with ample shade, seating, views of the Santa Catalina Mountains and sculptural elements that reflect the larger neighborhood context. Active spaces for gatherings as well as passive spaces for strolling, walking, day dreaming, or socializing are embedded in a naturalistic setting. The meandering form of paths with alternating views of basins alongside a group of plantings - akin to an oasis - creates some mystery and provokes the question, "I wonder what's over there." The layout of seating opportunities provides of a variety of experiences - whether in the sun, in the shade, in groups or alone - while allowing users to stay visibly connected to their surroundings. The significant presence of trees frames the linear park, and offers cooling services, within the warmer months of the year they can decrease the temperature by 5 to 10 degrees F. The dense tree canopy provides an attraction to people, making them want to stay and encouraging spontaneous interaction.

- GOALS:**
- Encourage pedestrian use of linear park
 - Provide shade and seating opportunities
 - Promote sense of community
 - Display sustainability
 - Provide conditions for nocturnal use
 - Represent history of Jefferson Park neighborhood

- OBJECTIVES:**
- Use lighting elements on ground plane for safety, encouraging use of park at night
 - Employ low maintenance native plant material

University of Arizona
LAR526_F17
Diana Elbirt

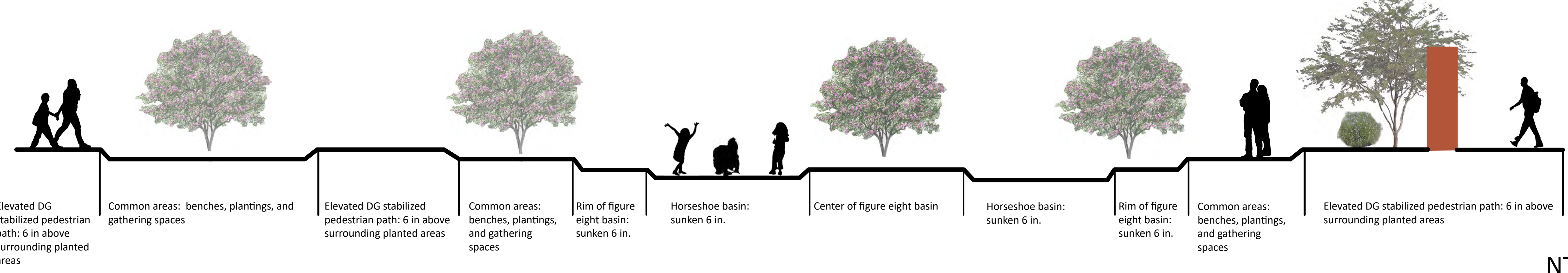


Perspective

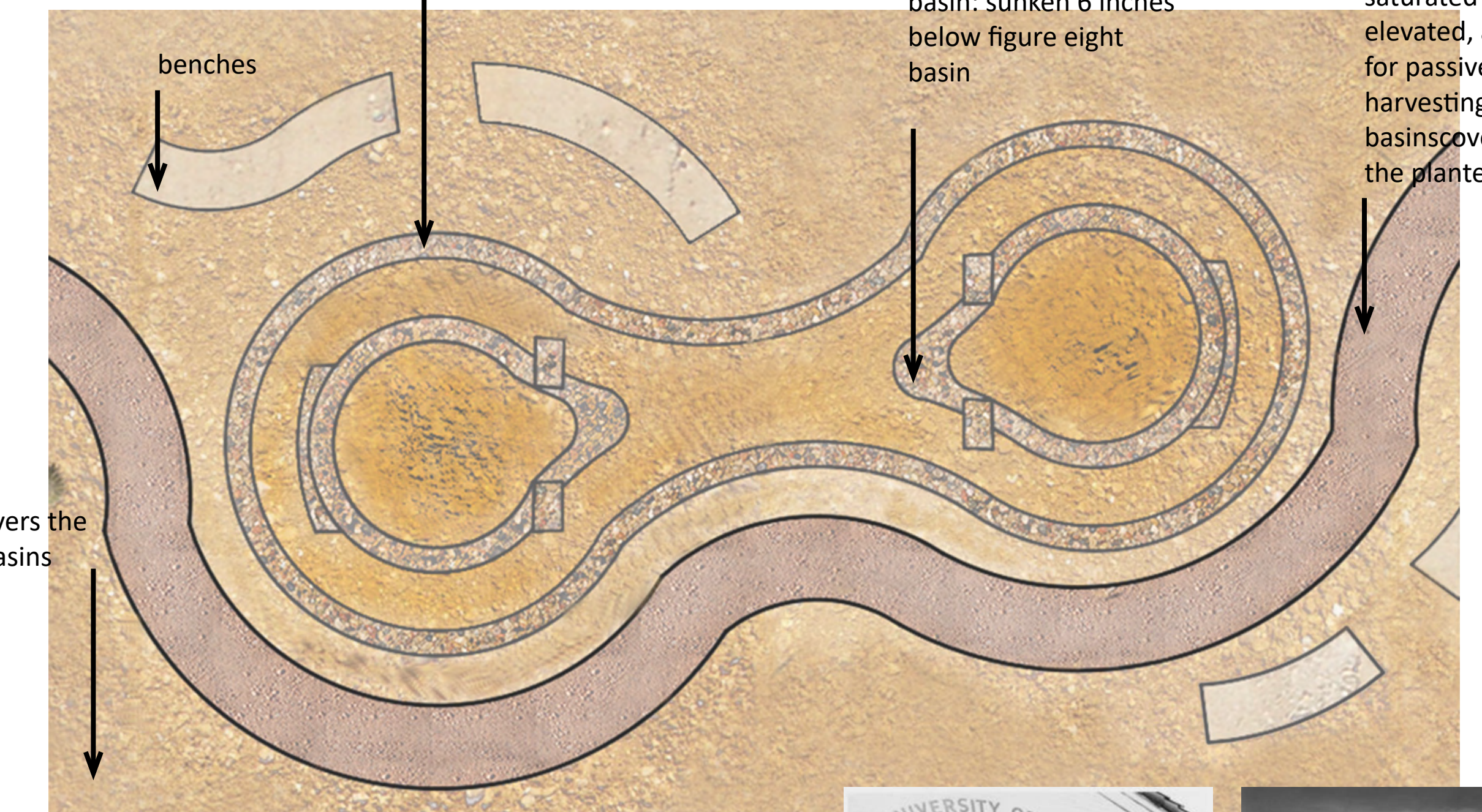


View of Park from northeast entrance to park on Santa Rita Ave and Grant Rd: a lush and multi story cactus garden is enjoyed by pedestrians from the elevated rose colored stabilized DG path. A simple corten steel arch frames views of the linear park, revealing open and vegetated areas beyond.

Section



Detail



A detailed view of the figure eight basins that in themselves contain horseshoe shaped sunken areas as a symbolic gesture to the historic polo fields of Jefferson Park.

